



College

Vineyard Leadership College



Prospectus





Hello,

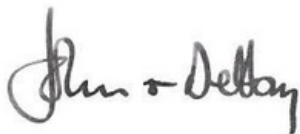
Thank you for picking up this prospectus for the Vineyard Leadership College.

The scriptures say that those who desire to be leaders "desire a noble task." Perhaps that's you? Or maybe the idea of leading others is, frankly, terrifying to you... but you know in your soul that the Lord has called you to serve him in this way? The Leadership College is designed for people exactly like you.

There is a desperate need in our world today for leaders, both in the Church and the marketplace, who will lead with integrity and with hope, with vision and by the enabling of the Spirit of God.

We would love you to pray and to consider whether this may be your next step in your adventure with Jesus.

With love,



John and Debby Wright

National Directors, Vineyard Churches UK & Ireland





South England & London Campus

PATHWAY

The Vineyard Ministry Pathway



The Leadership College is a key step in our movement's pathway for leadership. That means that it could form part of your journey towards vocational ministry in the Vineyard. Often, as in life, the steps overlap or come in a different order.

Essentials

Vineyard Leadership Essentials

This is an off-the-shelf leadership training course that is available to be run in most Vineyard churches in the UK and Ireland. Covering many of the most important and foundational aspects of leadership, Leadership Essentials is the perfect place to grow in understanding and insight alongside others from your church family.

See vcuki.co/essentials for more info.

College

Vineyard Leadership College

A year-long intensive part-time programme for those experiencing a compelling call to leadership and seeking to invest in that call in an intentional and deliberate way. We anticipate that many of those stepping into vocational ministry or church planting in the coming years will be graduates of the Leadership College. If you haven't participated in Leadership Essentials before, then this can be combined with the Leadership College.

Launch

Vineyard Launch Training

A week-long intensive course with follow-on sessions for those just about to step into church planting or vocational leadership in a Vineyard Church.

Theology

Vineyard Theological Training

A series of filmed modules created to help train and equip you in the richness of the Bible and the Kingdom of God and designed to be used in Small Groups. Through these films you will hear from some of the brightest theological minds in the Vineyard, and as you watch these our hope is that you will see the beauty of the Bible being unlocked and unpacked.

We are also thrilled to partner with WTC, an accredited theological training college with 12 campuses around the UK and Ireland. We wholeheartedly commend their courses, all of which are part-time and accessible for those from all kinds of educational backgrounds. For more info see wtctheology.org.uk

Support

Vineyard Support

As people step into positions of responsibility and leadership within our movement, we have a wide range of support structures and programmes. These are designed to ensure that each person sets out on the right path, continues in their growth, maintains healthy rhythms and practises, and continues for the long run.





What is the Vineyard Leadership College?



A church-based, multi-campus, multi-disciplinary training programme for VCUKI



| A TRAINING ENVIRONMENT FOR THE WHOLE MOVEMENT

The Leadership College is an evolution of a course that was run in the Scottish Vineyard churches for a number of years before we then launched across the entire movement in September 2022. It is aimed at students aged 21+ and you could be among some of the first students graduating and stepping into the next phase of your calling.

| CHURCH-BASED

You do not need to move house or church to study with the Leadership College. In fact the opposite is true, the home base for your learning and development is your local Vineyard church.

"Having been a Christian my whole life I thought I was pretty sorted, but from the first day of Vineyard Leadership College, God has been showing me areas in my personal and spiritual life that needed work in order that I can step into the leadership space Jesus has for me. It has really been an acceleration in the moulding and shaping of my life and the plans that he has in store."

- Alen, Lincoln

I MULTI-CAMPUS

The other focal point for your course will be your nearest College campus, of which there are 6 spread across our nations. For those who live more than 45 minutes travel distance away from the campus, there is the option to participate in an interactive online hybrid classroom* connected to your campus, meaning that you only need to attend in-person approximately once per month.

*Not just a laptop in the corner of the room, but utilising advanced interactive technology.

I MULTI-DISCIPLINARY

The aim of the course is to equip you for leadership in a way that matches your immediate sense of call. For this reason, one aspect of the course involves a ministry elective which focuses your learning into one of a range of ministry-specific options.

I TRAINING PROGRAMME

This is a year-long part-time intensive course designed to accelerate the development of your understanding and the depth of your discipleship. It involves a significant time commitment, including attendance at the campus (either in-person or online) for a whole day on a Thursday, during the three terms.

I FOR VINEYARD CHURCHES UK & IRELAND

The Leadership College is an initiative for the whole of our movement in all of our nations.





Our 4 Ministry Values

| EDUCATION

The course follows a curriculum which has been designed by experienced and seasoned leaders from around the movement. It has been shaped by educators in a way that takes account of the most recent research into how people learn and process information in a way that sticks.

| TRANSFORMATION

Our intention is to create an environment in which your growth in knowledge and understanding is matched by a similar level of growth in faith, and expectation. Our desire is that each student would experience a significant measure of healing and spiritual development throughout the course of the year.

| COMMUNITY

It says in the book of Proverbs that "as iron sharpens iron, so one person sharpens another." As soon as the College year starts, a rich and deep sense of mutuality and friendship will begin to form amongst the students, as a beautifully diverse student body is moulded by the Holy Spirit into a learning and growing community. These relationships will be formational during the journey and last for many years to come.

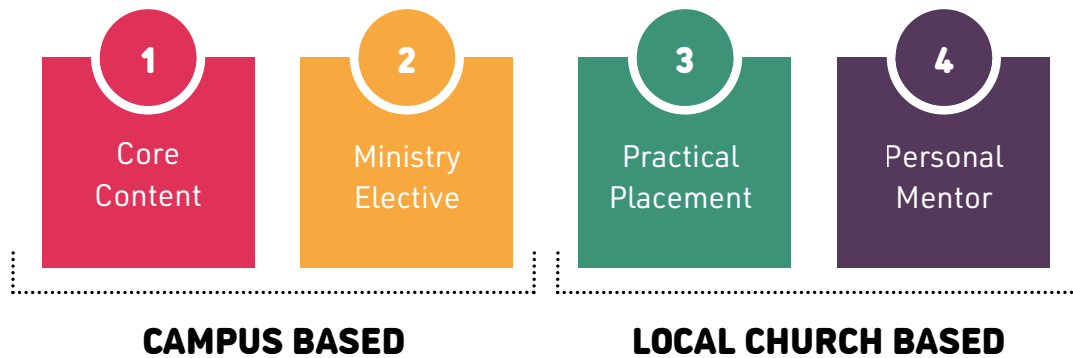
| CAUGHT AND TAUGHT

As well as high quality taught content from leaders and experts from the Vineyard around the world, a central aspect of the course is access; access to the leadership culture of your own church, and to many of the leaders at the heart of our movement. Deliberate space is created for informal conversation and observation, and there will be plenty of interaction and opportunity to ask questions.





Course Content // 4 Key Elements



At its heart, the Leadership College is a beautiful partnership between the local church and the College Campus, with each one working together to invest in the students in a way that brings about lasting growth and effective learning.



CORE CONTENT

Several years ago, research was carried out amongst leaders across our movement, and the result was a set of observable qualities that were common in nearly all resilient and multiplying leaders. We call these the 5 Essential Characteristics of a Pioneering Leader. All the students of the Leadership College will follow a core curriculum, which is focussed around these characteristics, which are:

- Vision and Calling
- Spiritual and Emotional Capacity
- Gathering & Evangelism
- Leadership and Multiplication
- Communication

As well as these core practical topics, all College students follow a foundational theological curriculum, centred around several modules of Vineyard Theological Training.



North England & Midlands Campus

2

Ministry Elective

MINISTRY ELECTIVE

The course also aims to equip students in a targeted way for their particular call to ministry, by enabling them to choose a particular Elective for around 20% of the taught sessions. The curriculum for these Electives has been carefully crafted by leaders in our movement who are seasoned and well-respected in their respective fields of expertise. During application, potential students must rank their choice of Elective in order of preference. Electives available currently are:

- Pastoral and Pioneering Leadership
- Kids Ministry
- Youth Ministry (Youth Ministry students only may be 18+ at point of application)
- Compassion Ministry
- Worship Ministry

For more information about each elective visit vcuki.co/CollegeElectives

3

Practical Placement

PRACTICAL PLACEMENT

It's essential that everything that is being learned in the classroom finds its way into practical activity and ongoing development beyond the classroom. To this end, each student is provided with a significant opportunity to apply their learning in their local church setting.

4

Personal Support Mentor

PERSONAL SUPPORT MENTOR

During what is an intense season of growth and challenge, each student is supported and cared for by a personal mentor from their local church. This is a safe environment to surface long-held struggles and to work through patterns of thought and behaviour, as well as to laugh and to pray. Students will meet with their mentors every 2 - 3 weeks for the duration of the course.





We absolutely loved our College year. It was a step of obedience and following God's leading with no clear destination other than equipping us to serve his church. Over that year we were able to journey with our College family and learn heaps along the way! In January of 2024 we started as site pastors for the North site at Vineyard Church Cardiff. It's amazing to still be connected with our College contingent and a toolbox of resources from our year. Really glad we took the risk and did the year!

- Chris & Steph, Cardiff



Scotland Campus

Campus Day Format

The schedule for each Thursday in each campus, follows a similar rhythm, an example of which is below:

| | |
|--|--|
| 9:00 - 10:00 | Worship & Ministry |
| 10:00 - 11:00 11:15 - 12:15 | Campus Session 1 Campus Session 2 |
| 12:15 - 13:15 | Lunch & Campus Gathering |
| 13:15 - 14:15 | Ministry Elective Session |
| 14:30 - 15:30 15:45 - 16:45 | National/International Session 1 National/International Session 2 |





Campus Day Format

| HYBRID CLASSROOMS

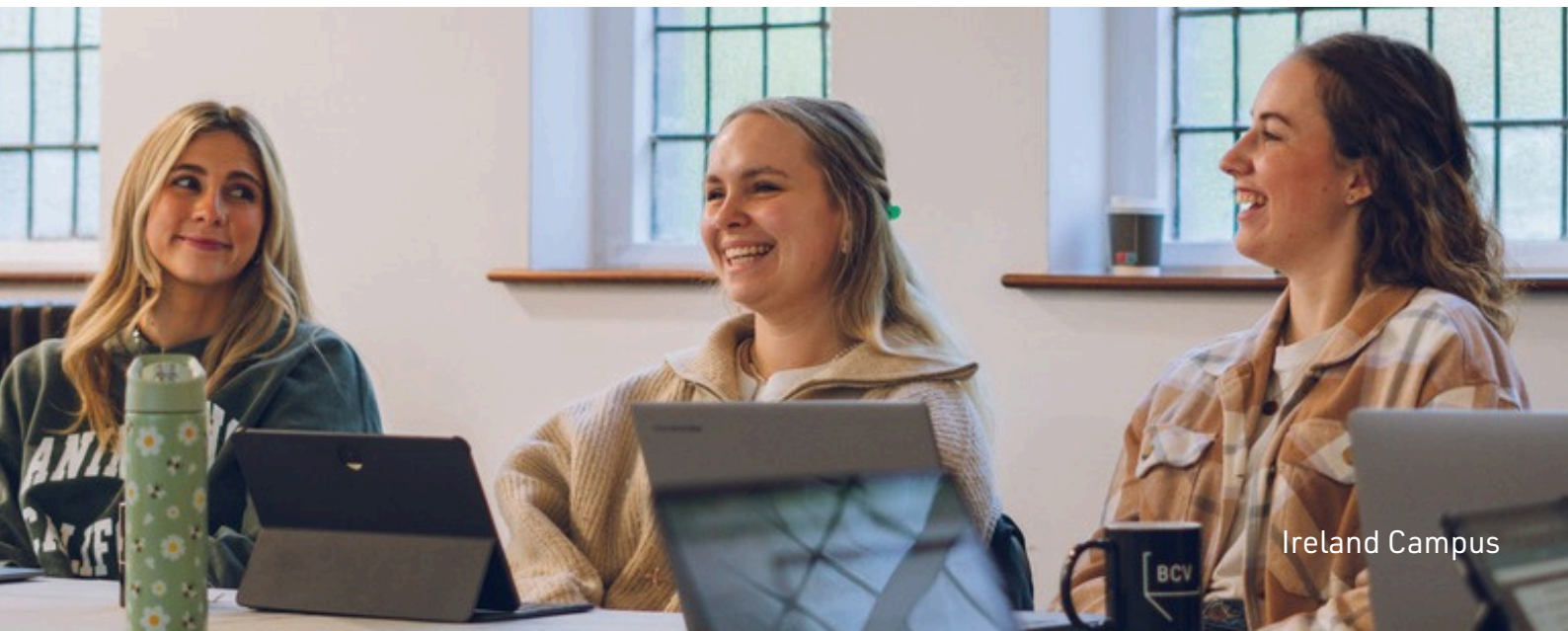
Whilst most students will want to travel to their nearest campus each week during term-time to be in-person for the day, clearly many students will live some miles away. For any student who lives more than 45 minutes travelling time from their nearest campus, they will have the opportunity to join with their campus online using a hybrid interactive classroom model for many of the Thursdays, with in-person attendance only required around once per month by agreement with the Head of Campus. **The hybrid nature of the sessions means that all students should have access to headphones and a wifi device (e.g. laptop, mobile, tablet).**


| INDUCTION DAYS

Every new Leadership College year begins with two induction days before the term begins. All students for each campus have the chance to come together, share their stories and lay some foundations (practical and spiritual) for the year ahead.

| RESIDENTIALS

During the year, there are two residentials, during which all of the Leadership College students from all over the UK and Ireland gather together. These times are about retreating to advance, with extended opportunity for worship and ministry. The teaching content is carefully selected for these moments, and there are various opportunities to connect across campuses and deepen developing friendships.





"I worked as a consultant gynaecologist throughout my time at the Leadership College. I'm still working as a consultant gynaecologist, but now my husband and I are planting a church too!"

- Lawrize, Dundee





North Campus

Commitment & Cost

A wholehearted participation in the Leadership College will require a significant investment of time, energy and heart. The time requirements would include:

- Attendance at a Campus every Thursday during each of the three terms (in-person or hybrid).
- A strong commitment to your local church (inc. serving on Sundays and in mid-week small groups).
- 1-2 evenings (or equivalent) per week for Practical Placement (usually linked to Ministry Elective).
- 3-4 hours per week for personal study.

| | |
|------------------------------|--|
| APPLICATION FEE - £20 | Non-refundable. We will waive the application fee for any applications made before 15 th May 2026. |
| DEPOSIT - £349 | Non-refundable and payable on acceptance of place offered (in addition to the course fees below). |
| COURSE FEES - £1,498 | These are payable either: <ul style="list-style-type: none">• 1 x £1,498• 3 x £499.33 payable by the start of each term• 12 x £124.83 payable by the 1st of each month beginning 1st September |
| TOTAL AMOUNT - £1,867 | |

We are desperate to ensure that costs are never the reason why a potential student cannot participate in the College programme. For this reason, there are a number of schemes that all students are welcome to apply for.

TRAVEL SUBSIDY

Available to any student who lives more than 45 minutes travel time from their nearest Campus and who requires some financial assistance to enable their participation.

Have a look at our FAQs for a breakdown of what this looks like.

FEES SCHOLARSHIP

Each year there are a number of scholarship places available for those students who would be unable to participate in the College under standard fee conditions. The scholarship course and residential fees are one third of the usual cost.

SUPPORT BURSARY

In a very limited number of cases it may be possible to receive financial support in order to release a student from their regular employment for the one day per week requirement of the College.

See vcuki.co/CollegeFAQs for further details on each of these schemes including the deadlines for scholarship and bursary applications.

| TERM DATES

The College year runs from September until June, with breaks for Christmas and Easter.

Scan the QR code to find out all of the term dates as well as the two induction days and College residentials. Please note, the induction and residentials will take place on weekdays.





How to Apply

Step
1

Attend

Come to an Open Morning and see for yourself what the Vineyard Leadership College is like or join us for one of our online Open Evenings. Both of these are an excellent opportunity to ask questions and meet current and former students.

Step
2

Consult

Invite the thoughts, prayers and considerations of those who know you well, including your pastor.*

Step
3

Pray

Soak the whole thing in prayer and ask the Lord for his direction.

Step
4

Apply

Visit the website (vcuki.org/college) to make your application.

We can't wait to meet you, and to serve you as you take your next step in God!

*Please note before any application is taken to interview a pastoral reference must be submitted. Please ensure to discuss your College application with your pastor / one of your pastors before submitting.

All information in this prospectus is accurate at the time of publication.

God wants you! Are you hearing me? What God wants is ALL of you. He wants to consume you. In that process you will serve. Service is good, but your service won't count for much if it isn't done with a giving of self, with a yielding of your inner person and all that you are about. That's what God calls us to; a life of giving of ourselves.

- John Wimber (Vineyard Founder)



"I have loved the community of the College, getting to journey with others and seeing the Spirit transform each of us has been amazing. I have particularly loved learning more about Kingdom theology and seeing how it has changed my lens on life and drawn me closer to Jesus. I have also loved how safe the college is to press in to areas of discomfort and see what God wants to do."

- Vic, Wokingham



College

Vineyard Leadership College



FIND OUT MORE AT [VCUKI.CO/COLLEGE](https://vcuki.co/college)

